

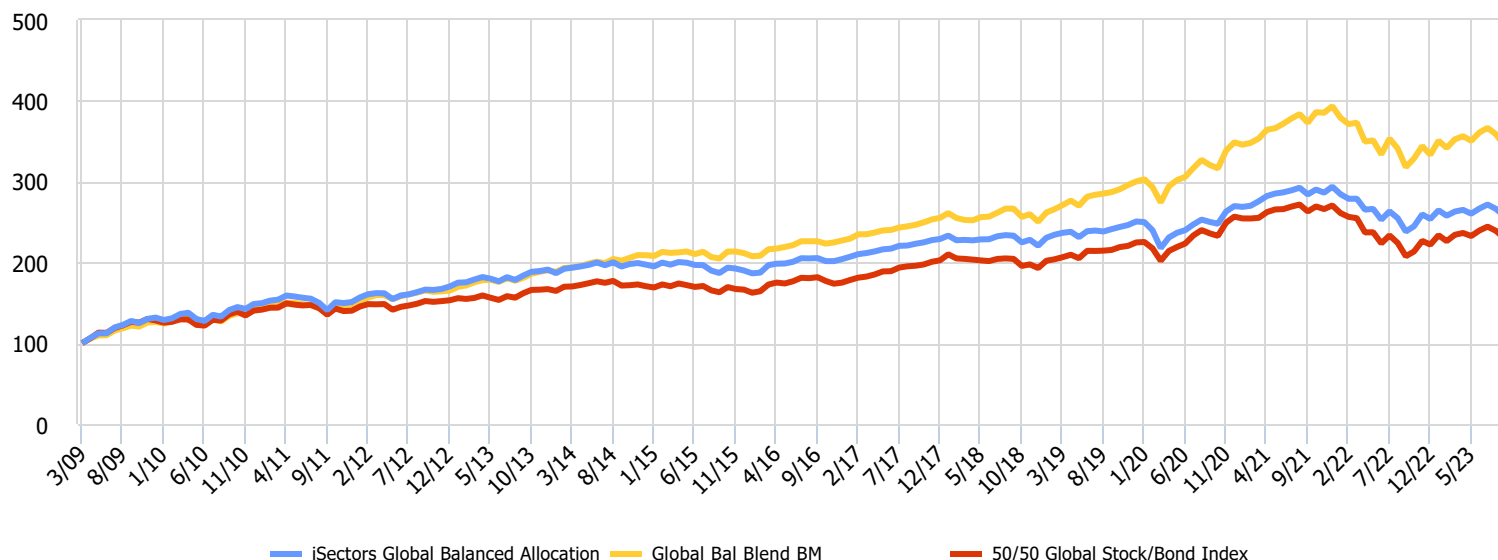
iSectors® Global Balanced Allocation

9/2023



The objective of the iSectors® Global Balanced Allocation model is to provide for longer term growth of capital and modest income. The equity portion of the portfolio (approximately 50%) is allocated among a diversified selection of domestic and international low-cost equity index-based exchange-traded funds (ETFs). In addition, fundamentally-weighted, dividend-focused index ETFs are used in an effort to enhance return and reduce volatility. The remaining 50% of the allocation is invested in fixed income ETFs. The core of the fixed income portion of the portfolio holds domestic and international government, investment grade corporate, and mortgage-backed bonds with various maturities. The remainder of the fixed income portfolio is invested in ETFs that hold noninvestment grade, fixed income securities and high-yield bonds in an effort to add diversification and the potential for increased returns. Two percent of the portfolio is invested in cash and/or cash equivalents to provide liquidity and facilitate transactions.

Growth of \$100 Investment



Investor Type:	Moderate	Portfolio Inception:	4/1/2009
Benchmark 1:	Global Balanced Blend BM	Maximum Manager Fee:	0.10%
Benchmark 2:	50/50 Global Stock/Bond	Estimated Net Underlying Vehicle Costs:	0.30%
Availability:	Separately & Unified Managed Account	Morningstar ID:	F00000GWNN

Product Name	Returns MRQ	Returns 1 Year	Returns 3 Years	Returns 5 Years	Returns 10 Years
iSectors Global Balanced Allocation	-3.33	8.19	1.02	2.03	3.44
Global Bal Blend BM	-4.16	8.75	2.55	5.35	6.69
50/50 Global Stock/Bond Index	-3.77	10.94	-0.78	2.43	3.59

Risk Stats: Since Inception	iSectors Global Balanced Allocation	Global Bal Blend BM	50/50 Global Stock/Bond Index
Returns	6.75	8.93	5.93
Cumulative Returns	157.78	245.74	130.43
Correlation to BM 1	0.96	1.00	0.94
Annualized Alpha vs. BM 1	-2.09	0.00	-2.91
Sharpe Ratio	0.66	0.95	0.55
Sortino Ratio	1.03	1.55	0.86
Standard Deviation	9.03	8.55	9.31
Max Drawdown	18.89	19.16	23.54

	Product	BM 1	BM 2
2022	-13.59	-15.27	-17.92
2021	8.91	12.80	5.41
2020	7.62	16.17	14.21
2019	13.58	19.89	16.41
2018	-3.63	-1.90	-4.73
2017	12.21	12.37	15.78
2016	7.43	7.39	5.21
2015	-3.70	1.22	-2.47
2014	3.22	9.84	2.15
2013	12.23	15.25	9.00

Performance and data in this illustration are presented net of underlying vehicle costs and iSectors' management fee. Presentation not complete without more detailed fee information and other disclosures located on the reverse side.

Past performance is not necessarily indicative of future results.

Not Guaranteed. Not Insured. May Lose Value.

© 2023 iSectors, LLC. All Rights Reserved.

Monthly Returns													
	Jan	Feb	Mar	Apr	May	Jun	Jul	Aug	Sep	Oct	Nov	Dec	Year
2023	4.19	-2.52	2.00	0.78	-1.76	2.43	1.86	-1.94	-3.22	---	---	---	1.56
2022	-3.17	-2.02	0.05	-4.86	0.34	-4.99	4.05	-3.17	-6.50	2.71	6.00	-2.15	-13.59
2021	-0.37	0.50	2.10	2.33	1.07	0.52	0.87	1.11	-2.82	2.10	-1.32	2.60	8.91
2020	-0.29	-4.05	-9.17	5.98	2.53	1.36	2.96	2.42	-1.15	-0.90	6.10	2.57	7.62
2019	4.45	1.63	1.01	0.55	-2.78	3.16	0.33	-0.48	1.23	1.10	0.98	1.77	13.58
2018	1.83	-2.46	0.19	-0.25	0.52	0.07	1.61	0.61	-0.27	-3.58	1.44	-3.23	-3.63
2017	1.47	1.54	0.64	0.96	1.19	0.41	1.58	0.17	0.99	0.78	1.23	0.61	12.21
2016	-1.83	0.47	4.98	0.86	0.12	1.07	2.20	-0.10	0.18	-1.82	-0.02	1.23	7.43
2015	-1.09	2.40	-1.28	1.62	-0.41	-1.38	-0.11	-3.45	-1.58	3.57	-0.61	-1.26	-3.70
2014	-2.30	2.91	0.72	0.80	0.96	1.49	-1.70	1.89	-2.65	1.57	0.63	-0.99	3.22
2013	2.72	0.29	1.93	1.72	-1.11	-1.80	2.90	-1.91	3.11	2.45	0.50	0.95	12.23
2012	3.77	2.55	0.86	-0.15	-4.40	2.88	0.89	1.68	1.91	-0.25	0.75	1.85	12.82
2011	0.69	2.10	0.81	3.32	-0.75	-1.02	-0.74	-3.27	-6.01	6.90	-0.72	0.85	1.62
2010	-2.28	1.63	4.04	1.21	-5.68	-1.82	5.97	-1.64	6.06	2.63	-1.60	4.28	12.76
Portfolio Characteristics				Global Fixed Income Allocation				(50%)	Global Equity Allocation				(50%)
Management Style: Strategic - Passive				Dom Govt/Inv Grade Bonds				53.9%	Dom Large Cap Value/Dividend				31.1%
Leverage: No Leverage				High Yield (Dom/Intl)				9.8%	Dom Large Cap Growth				14.7%
Portfolio Type: Core				Intl Inv Grade Bond				24.5%	Dom Sm-Mid Val/Div				11.4%
Geographic Universe: Global				Securitized Fixed Income				9.8%	Dom Sm-Mid Growth				4.8%
Securities Universe: ETFs				Cash				2.0%	Intl Developed Equity				20.5%
Current # of ETFs: 28									EM Equity				15.5%
12-Month Yield: 3.08%									Cash				2.0%
Manager-Contact Info													

Manager-Contact Info

iSectors®, LLC				Website:				iSectors.com					
5485 W. Grande Market Drive Suite D Appleton WI 54913				Manager Contact:				John Koch, Senior Investment Analyst					
Marketing Contact: Scott Jones				Phone: 800.869.5184				Phone: 800.869.5198					

Disclosure

General Disclosure

iSectors® is a suite of proprietary asset allocation models and services. iSectors®, LLC is an affiliate of Sumnicht & Associates, LLC (Sumnicht) and, as such, iSectors® and Sumnicht share certain employee services. iSectors® became registered as an investment advisor in August 2008. iSectors® is a registered trademark of Sumnicht Holdings, LLC.

The contents of this presentation are for informational purposes only. Content should not be construed as financial or investment advice on any subject matter. This is neither an offer nor a solicitation to buy and/or sell securities. Information pertaining to iSectors® operations, services, and fees is set forth in its current disclosure statement (Form ADV, Part 2 Brochure), a copy of which is available upon request.

iSectors® asset allocation models are not guaranteed and involve risk of loss. At any given point in time, the value of iSectors® asset allocation model portfolios may be worth more or less than the amount invested. Different types of investments and/or investment strategies involve varying levels of risk, and there can be no assurance that any specific investment or investment strategy (including the investments and/or investment strategies devised or undertaken by iSectors®) will be either suitable or profitable. Financial professionals are responsible for evaluating investments risks independently and for exercising independent judgement in determining whether investments are appropriate for their clients.

Past performance may not be indicative of future results. Therefore, no current or prospective investor should assume that future performance will be profitable, or equal either the performance results reflected or any corresponding historical index. Asset allocation and diversification concepts do not ensure a profit nor protect against loss in a declining market.

The historical benchmark index performance results are provided exclusively for comparison purposes to assist an advisor in determining whether the performance of a specific investment meets their respective client's investment objective(s). It should not be assumed that any account holdings will correspond directly to any comparative index. Index performance results do not reflect the impact of taxes. Indexes are not available for direct investment. Index performance results are compiled directly by each respective index and obtained by iSectors® from reliable sources. Index performance has not been independently verified by iSectors®. iSectors® models are based on index ETFs that can neither outperform nor underperform their benchmark index. We provide benchmark indexes that are well known for comparison purposes only.

Fee Information

Composite performance results reflect the reinvestment of dividends and other account earnings and do not reflect the impact of taxes. Composite performance results provided are net of iSectors® standard management fee with the assumption that the fee will remain constant for all accounts. Additional fees that could be charged such as platform and custodial fees are not included. iSectors® asset allocation models are available through registered investment advisors who will charge an additional fee for their advisory services. For reasons including size of account, platform provider and custodian utilized, as well as variances in portfolio account holdings, market fluctuation, the date on which an investor engaged iSectors® services, regular model rebalancing and/or updates, and timing of account contributions and withdrawals, the underlying fees and performance of a specific account may vary from other accounts. ERISA (group retirement) accounts may be subject to additional recordkeeping and/or administrative fees.

GIPS® Information

This information is marketed to investment professionals. iSectors®, LLC has managed the asset allocation models since the Firm's inception in 2008. Previously, Sumnicht & Associates, LLC (Sumnicht), an affiliated company, managed the allocations. Sumnicht is a provider of investment management services for institutional, family office and individual clients. Sumnicht claims compliance with the Global Investment Performance Standards (GIPS®). Sumnicht claims that the allocations are GIPS® compliant since each allocation's respective inception dates and have been GIPS® verified from 1/1/2008 to 12/31/2022, as of the verification date of 7/18/2023. The allocation composites include both institutional and individual client accounts whereby iSectors® has sole portfolio discretion with investment objectives matching that of each specific allocation. Performance in this publication is shown in US dollars, net of iSectors® management fee, including the reinvestment of dividends and does not reflect the impact of taxes. Returns will be reduced by platform, custodial, trading, and advisory fees, if applicable. GIPS® is a registered trademark of CFA Institute. CFA Institute does not endorse or promote this organization, nor does it warrant accuracy or quality of the content contained herein. Past performance is not indicative of future results. To obtain a compliant presentation and a list and description of the Firm's composite performances, please contact John Koch, Senior Investment Analyst, at (920) 257-5170.

You should not assume that any discussion or information contained in this presentation serves as the receipt of, or as a substitute for, personalized investment advice from an investment professional.

This presentation has not been reviewed, submitted for review before, or otherwise approved by FINRA, the SEC or any state or provincial securities regulators.