

iSectors® Tactical Global Balanced Allocation

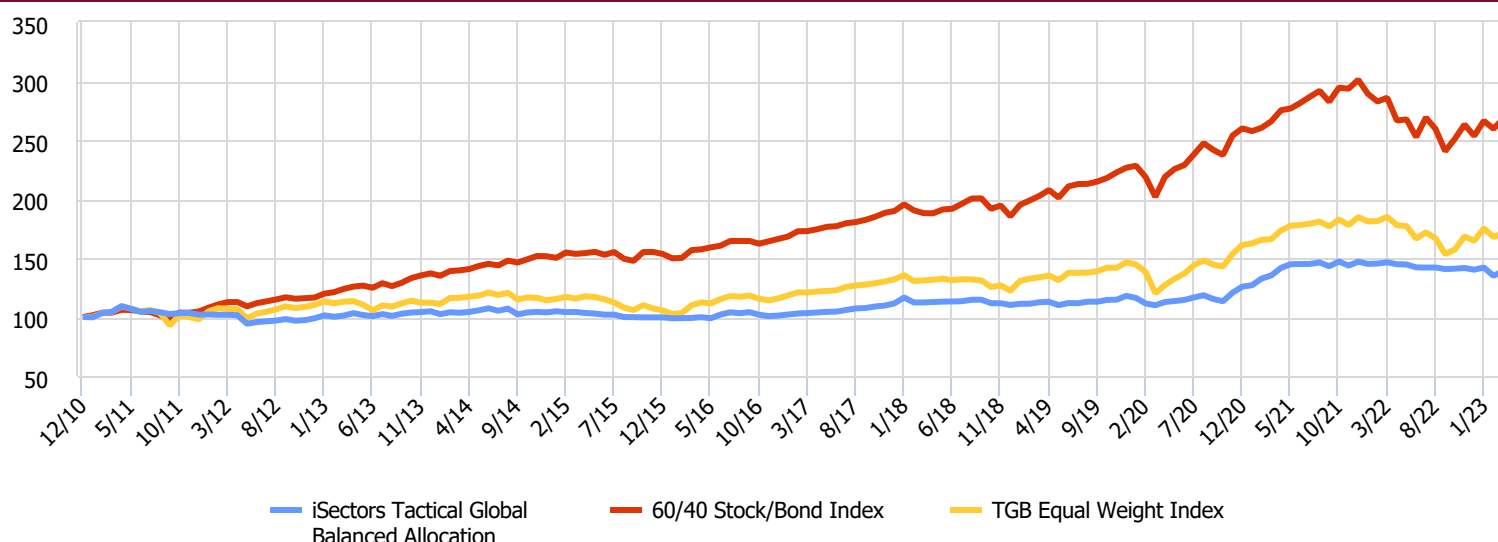
3/2023



The objective of iSectors® Tactical Global Balanced Allocation is to seek modest growth of capital while attempting to avoid large portfolio draw downs (losses) through the implementation of a tactical strategy across a globally diversified portfolio of major asset classes.

The iSectors® Tactical Global Balanced Allocation offers a comprehensive investment approach diversified across major global asset classes, including domestic equities, international and emerging market equities, bonds, commodities, gold, and real estate. The model actively manages the investments within the portfolio, utilizing a proprietary trend-following methodology to allocate among the model's targeted asset classes and to cash (or short-term bonds). This model's objective is to be in 100% cash alternatives/short-term bonds during prolonged declines in individual asset classes to reduce overall portfolio draw down. The iSectors® Tactical Global Balanced model seeks to invest in low-cost index ETFs to achieve its objectives.

Growth of \$100 Investment



Investor Type:	Moderate	Portfolio Inception:	1/1/2011
Benchmark 1:	60/40 Stock/Bond Index	Maximum Manager Fee:	0.50%
Benchmark 2:	TGB Equal Weight Index	Estimated Net Underlying Vehicle Costs:	0.14%
Availability:	Separately & Unified Managed Account	Morningstar ID:	F00000LOH7

Product Name	Returns MRQ	Returns 1 Year	Returns 3 Years	Returns 5 Years	Returns 10 Years
iSectors Tactical Global Balanced Allocation	-0.89	-5.12	8.08	4.33	3.22
60/40 Stock/Bond Index	5.67	-6.26	9.90	7.34	8.02
TGB Equal Weight Index	3.90	-7.50	12.48	5.46	4.23

Risk Stats: Since Inception	iSectors Tactical Global Balanced Allocation	60/40 Stock/Bond Index	TGB Equal Weight Index
Returns	2.72	8.38	4.48
Cumulative Returns	38.84	167.89	70.99
Correlation to BM 1	0.62	1.00	0.86
Annualized Alpha vs. BM 1	-0.76	0.00	-3.75
Sharpe Ratio	0.31	0.83	0.34
Sortino Ratio	0.46	1.29	0.49
Standard Deviation	6.44	9.21	11.10
Max Drawdown	13.72	20.10	17.97

	Product	BM 1	BM 2
2022	-4.61	-15.79	-10.87
2021	16.82	15.86	14.67
2020	6.58	14.73	9.95
2019	7.03	22.18	19.88
2018	-1.22	-2.35	-7.44
2017	10.19	14.21	13.99
2016	1.55	8.30	9.61
2015	-4.09	1.28	-7.46
2014	-0.84	10.62	1.77
2013	5.96	17.56	1.71

Performance and data in this illustration are presented net of underlying vehicle costs and iSectors' management fee. Presentation not complete without more detailed fee information and other disclosures located on the reverse side.

Past performance is not necessarily indicative of future results.

Not Guaranteed. Not Insured. May Lose Value.

© 2023 iSectors, LLC. All Rights Reserved.

Monthly Returns

	Jan	Feb	Mar	Apr	May	Jun	Jul	Aug	Sep	Oct	Nov	Dec	Year
2023	1.30	-4.90	2.88	---	---	---	---	---	---	---	---	---	-0.89
2022	-1.25	0.21	0.70	-1.09	-0.15	-1.71	-0.11	0.03	-0.93	0.22	0.44	-1.02	-4.61
2021	0.95	4.47	2.00	4.73	2.19	0.14	0.05	0.82	-2.16	2.84	-2.41	2.32	16.82
2020	-1.55	-4.01	-1.34	2.50	0.72	0.83	1.82	1.63	-2.69	-1.68	6.50	4.17	6.58
2019	0.90	0.04	1.15	0.30	-2.47	1.62	-0.15	1.21	-0.07	1.37	0.15	2.88	7.03
2018	4.47	-3.64	0.03	0.32	0.29	0.13	0.19	1.12	-0.02	-2.55	-0.04	-1.29	-1.22
2017	0.89	0.80	0.40	0.42	0.56	0.19	1.32	1.25	0.32	1.21	0.70	1.72	10.19
2016	-0.81	0.14	0.15	0.69	-0.90	3.16	1.86	-0.77	0.95	-2.17	-1.14	0.51	1.55
2015	0.87	-0.69	0.16	-0.88	-0.44	-0.91	0.00	-1.96	-0.10	-0.20	0.02	0.01	-4.09
2014	-2.31	1.60	-0.48	0.77	1.31	1.60	-1.99	1.81	-4.65	1.63	0.42	-0.31	-0.84
2013	2.48	-1.16	0.96	2.07	-1.54	-0.94	1.77	-1.57	1.89	0.95	0.42	0.61	5.96
2012	0.09	-0.29	0.07	-0.41	-7.12	1.54	0.67	0.66	1.31	-1.39	0.47	1.65	-3.04
2011	-0.26	3.59	1.02	4.67	-2.16	-2.37	0.73	-1.00	-1.51	0.80	0.20	-1.41	2.04

Portfolio Characteristics	Primary Asset Classes	Current Target Allocations
Management Style: Tactical	Equity	0.0%
Leverage: No Leverage	Fixed Income	84.0%
Portfolio Type: Core	Alternatives/Other	14.0%
Geographic Universe: Global	Cash	2.0%
Securities Universe: ETFs		Domestic Large-Cap
Current # of ETFs: 7		Cash
12-Month Yield: 2.24%		

Manager-Contact Info

iSectors®, LLC

5485 W. Grande Market Drive Suite D Appleton WI 54913

Website: iSectors.com

Marketing Contact: Scott Jones

Manager Contact: John Koch, Senior Investment Analyst

Phone: 800.869.5184

Phone: 800.869.5198

Disclosure

General

iSectors® is a suite of proprietary asset allocation models and services. iSectors, LLC is an affiliate of Sumnitch & Associates, LLC (Sumnitch) and, as such, iSectors and Sumnitch share certain employees' services. iSectors became registered as an investment advisor in August 2008. iSectors® is a registered trademark of Sumnitch Holdings, LLC. The contents of this presentation are for informational purposes only. Content should not be construed as financial or investment advice on any subject matter. This is neither an offer nor a solicitation to buy and/or sell securities. Information pertaining to iSectors' operations, services, and fees is set forth in its current disclosure statement (Form ADV, Part 2 Brochure), a copy of which is available upon request.

iSectors' asset allocation models are not guaranteed and involve risk of loss. At any given point in time, the value of iSectors asset allocation model portfolios may be worth more or less than the amount invested. Different types of investments and/or investment strategies involve varying levels of risk, and there can be no assurance that any specific investment or investment strategy (including the investments and/or investment strategies devised or undertaken by iSectors) will be either suitable or profitable. Financial professionals are responsible for evaluating investments risks independently and for exercising independent judgement in determining whether investments are appropriate for their clients.

Past performance may not be indicative of future results. Therefore, no current or prospective investor should assume that future performance will be profitable, or equal either the performance results reflected or any corresponding historical index. Asset allocation and diversification concepts do not ensure a profit nor protect against loss in a declining market.

The historical benchmark index performance results are provided exclusively for comparison purposes to assist an advisor in determining whether the performance of a specific investment meets their respective client's investment objective(s). It should not be assumed that any account holdings will correspond directly to any comparative index. Index performance results do not reflect the impact of taxes. Indexes are not available for direct investment. Index performance results are compiled directly by each respective index and obtained by iSectors from reliable sources. Index performance has not been independently verified by iSectors. iSectors models are based on index ETFs that can neither outperform nor underperform their benchmark index. We provide benchmark indexes that are well known for comparison purposes only.

Fee Information

Composite performance results reflect the reinvestment of dividends and other account earnings and do not reflect the impact of taxes. Composite performance results provided are net of iSectors' standard management fee with the assumption that the fee will remain constant for all accounts. Additional fees that could be charged such as platform and custodial fees are not included. iSectors asset allocation models are available through registered investment advisors who will charge an additional fee for their advisory services. For reasons including size of account, platform provider and custodian utilized, as well as variances in portfolio account holdings, market fluctuation, the date on which an investor engaged iSectors' services, regular model rebalancing and/or updates, and timing of account contributions and withdrawals, the underlying fees and performance of a specific account may vary from other accounts. ERISA (group retirement) accounts may be subject to additional recordkeeping and/or administrative fees.

GIPS® Information

This information is marketed to investment professionals. iSectors®, LLC has managed the asset allocation models since the Firm's inception in 2008. Previously, Sumnitch & Associates, LLC (Sumnitch), an affiliated company, managed the allocations. Sumnitch is a provider of investment management services for institutional, family office and individual clients. Sumnitch claims compliance with the Global Investment Performance Standards (GIPS®). Sumnitch claims that the allocations are GIPS® compliant since each allocation's respective inception dates and have been GIPS® verified from 1/1/2008 to 12/31/2021, as of the verification date of 7/20/2022. The allocation composites include both institutional and individual client accounts whereby iSectors® has sole portfolio discretion with investment objectives matching that of each specific allocation. Performance in this publication is shown in US dollars, net of iSectors' management fee, including the reinvestment of dividends and does not reflect the impact of taxes. Returns will be reduced by platform, custodial, trading, and advisory fees, if applicable. GIPS® is a registered trademark of CFA Institute. CFA Institute does not endorse or promote this organization, nor does it warrant accuracy or quality of the content contained herein. Past performance is not indicative of future results. To obtain a compliant presentation and a list and description of the Firm's composite performances, please contact John Koch, Senior Investment Analyst, at (920) 257-5170.

You should not assume that any discussion or information contained in this presentation serves as the receipt of, or as a substitute for, personalized investment advice from an investment professional.

This presentation has not been reviewed, submitted for review before, or otherwise approved by FINRA, the SEC or any state or provincial securities regulators.